



# MONTHLY MEMBERSHIP PROGRESS REPORT

Results as of: 3/31/2016

Multiple District 27

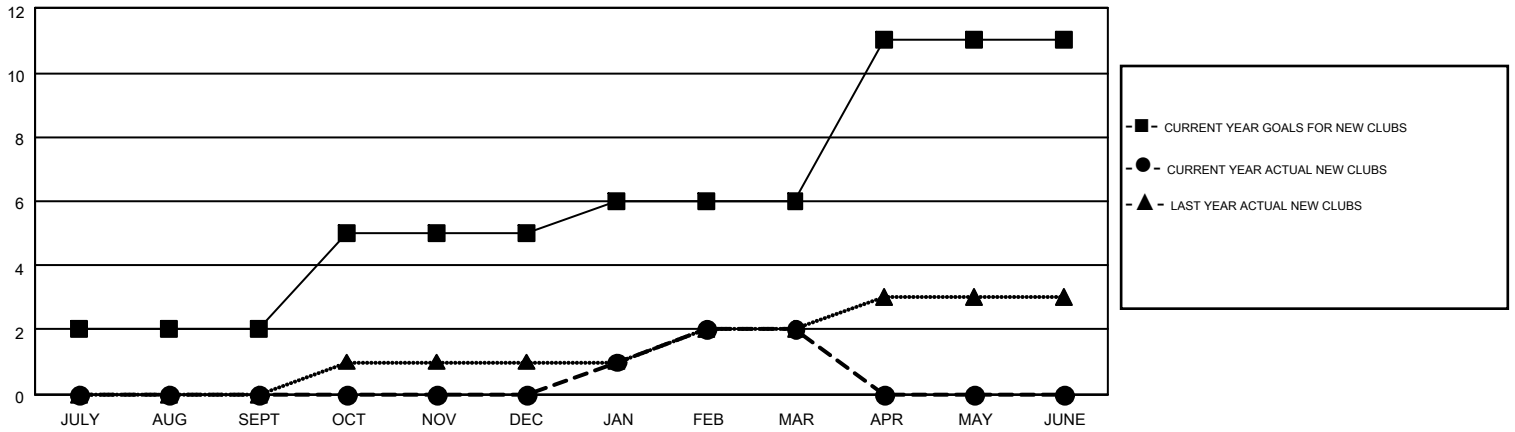
LOCATION: WISCONSIN

GMT: JUDY HANKOM

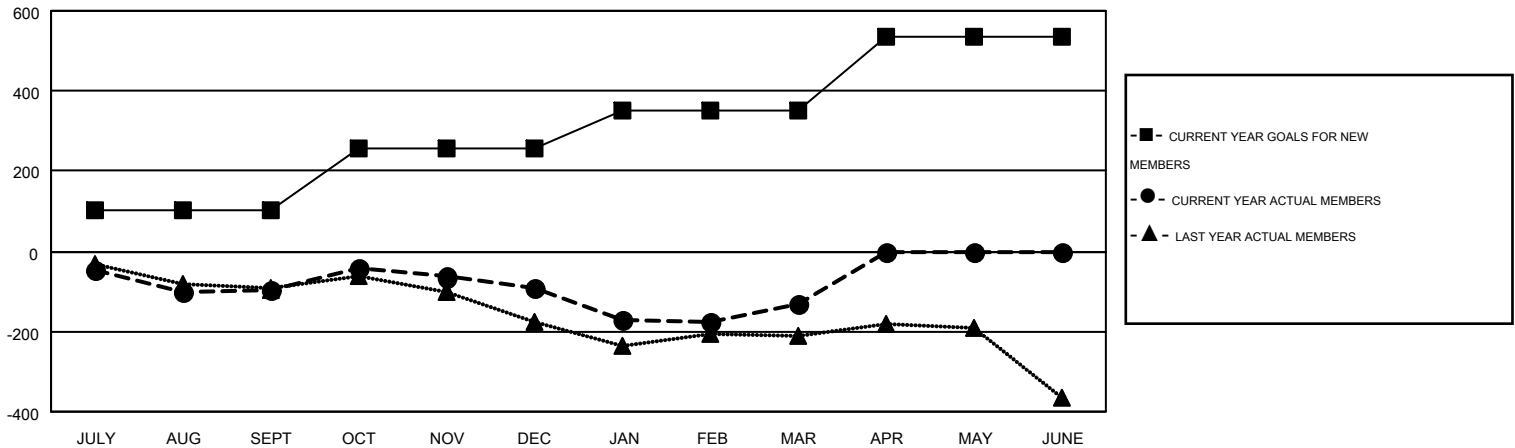
GMT CA 1

Clubs					Members				
RESULTS FOR 2015-2016					RESULTS FOR 2015-2016				
QUARTER	NEW CLUB GOAL	NEW CLUBS	DROPPED CLUBS	NET GAIN/LOSS	QUARTER	NEW MEMBER GOAL	CHARTER AND NEW MEMBERS ADDED	DROPPED MEMBERS	NET GAIN/LOSS
JULY/AUG/SEPT	2	0	1	-1	JULY/AUG/SEPT	103	331	429	-98
OCT/NOV/DEC	3	0	1	-1	OCT/NOV/DEC	155	415	408	7
JAN/FEB/MAR	1	2	1	1	JAN/FEB/MAR	93	422	461	-39
APR/MAY/JUNE	5	0	0	0	APR/MAY/JUNE	184	0	0	0

GOALS AND ACTUAL NEW CLUBS CUMULATIVE



GOALS AND ACTUAL MEMBERS CUMULATIVE



DROPPED CLUBS: 3	348 CLUBS OF 537 ADDED 1 OR MORE NEW MEMBERS	<u>GENDER DISTRIBUTION</u>			
<u>DROPPED MEMBERS</u>		MALE	14,365 (78.98%)		
DECEASED	170	FEMALE	3,822 (21.02%)		
CLUB CANCELLED	11	<a href="#">CLICK HERE FOR HEALTH ASSESSMENT DATA</a>			
OTHER	1,111			FAMILY UNIT MEMBERS	3,245
TOTAL	1,292			HEAD OF HOUSEHOLD	1,594
		NON-HEAD OF HOUSEHOLD	1,651		